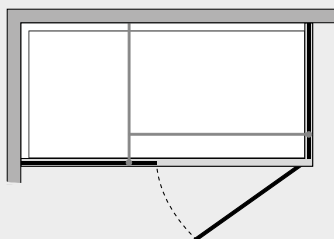


# Omega *P. battente c/fisso in linea e lato fisso (comp. ad angolo)*



OMPFL+OMFX



## *Caratteristiche prodotto*

- CABINA DOCCIA MODELLO OMEGA
- SERIE MINIMAL (SENZA TELAIO)
- PORTA CON APERTURA ESTERNA (A RICHIESTA ANCHE INTERNA)
- CHIUSURA MAGNETICA CON PROFILO ALLUMINIO



- LARGHEZZA 100 > 160 cm.
- PROFONDITA' 30 > 100 cm.
- ALTEZZA DI SERIE 198 cm. (MAX 198 cm.)



- ESTENSIBILITA' 20 mm. (larghezza) 20 mm. (profondita')



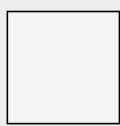
- SPESSORE VETRO 6 mm.



## *Finiture Profili*



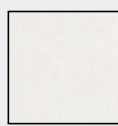
EXTRABRILL



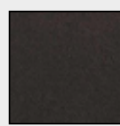
BIANCO  
LUCIDO



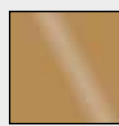
EFF. INOX  
SPAZZOLATO



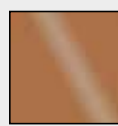
BIANCO  
MATERICO



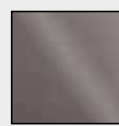
NERO  
MATERICO



ORO



RAME



TITANIO

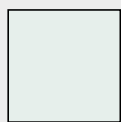


BIANCO  
PERLATO



MAZZETTA  
IDEAGROUP

## *Finiture Vetri*



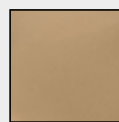
TRASPARENTE



CINCILLÀ



SATINATO



BRONZO



FUMÈ



EXTRACHIARO

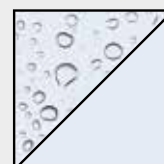
## *Lavorazioni speciali*



SERIGRAFIA 1



SERIGRAFIA 2



SGG TIMELESS®