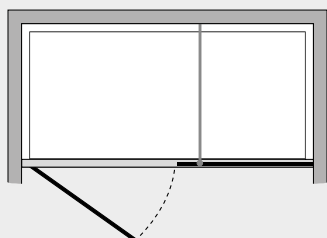


Omega *P. battente c/fisso in linea (in nicchia)*



OMPL + OMFL



Caratteristiche prodotto

- CABINA DOCCIA MODELLO OMEGA
- SERIE MINIMAL (SENZA TELAIO)
- PORTA CON APERTURA ESTERNA (A RICHIESTA ANCHE INTERNA)
- CHIUSURA MAGNETICA CON PROFILO ALLUMINIO



- LARGHEZZA 80 > 190 cm.
- ALTEZZA DI SERIE 198 cm. (MAX 198 cm.)



- ESTENSIBILITA' 20 mm.



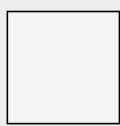
- SPESSORE VETRO 6 mm.



Finiture Profili



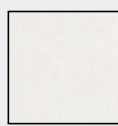
EXTRABRILL



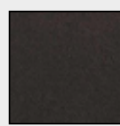
BIANCO
LUCIDO



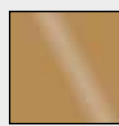
EFF. INOX
SPAZZOLATO



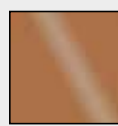
BIANCO
MATERICO



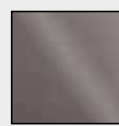
NERO
MATERICO



ORO



RAME



TITANIO

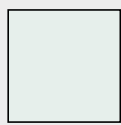


BIANCO
PERLATO



MAZZETTA
IDEAGROUP

Finiture Vetri



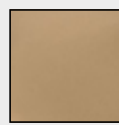
TRASPARENTE



CINCILLÀ



SATINATO



BRONZO



FUMÈ



EXTRACHIARO

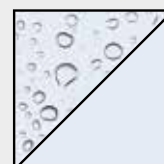
Lavorazioni speciali



SERIGRAFIA 1



SERIGRAFIA 2



SGG TIMELESS®