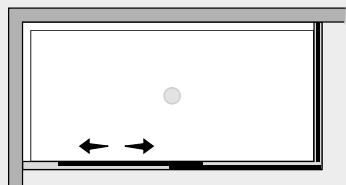


# Space

Porta scor. su parete c/lato fisso (comp. ad angolo)



SCPM+SCFX



## Caratteristiche prodotto

- CABINA DOCCIA MODELLO SPACE
- SERIE FRAME (CON TELAIO)
- PORTA SCORREVOLE CON MECCANISMO DI SGANCIO E SISTEMA SOFT-CLOSE
- CHIUSURA MAGNETICA CON PROFILO ALLUMINIO



- LARGHEZZA 97 > 180 cm.
- PROFONDITA' 27 > 120 cm.
- ALTEZZA DI SERIE 205 cm. (MAX 220 cm.)



- ESTENSIBILITA' 20 mm.



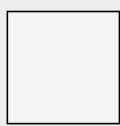
- SPESSORE VETRO 8 mm.



## *Finiture Profili*



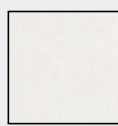
EXTRABRILL



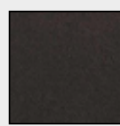
BIANCO  
LUCIDO



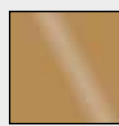
EFF. INOX  
SPAZZOLATO



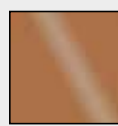
BIANCO  
MATERICO



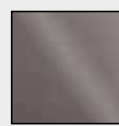
NERO  
MATERICO



ORO



RAME



TITANIO

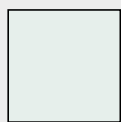


BIANCO  
PERLATO



MAZZETTA  
IDEAGROUP

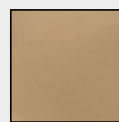
## *Finiture Vetri*



TRASPARENTE



SATINATO



BRONZO



FUMÈ



EXTRACHIARO

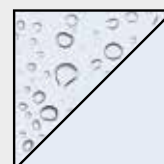
## *Lavorazioni speciali*



SERIGRAFIA 1



SERIGRAFIA 2



SGG TIMELESS®